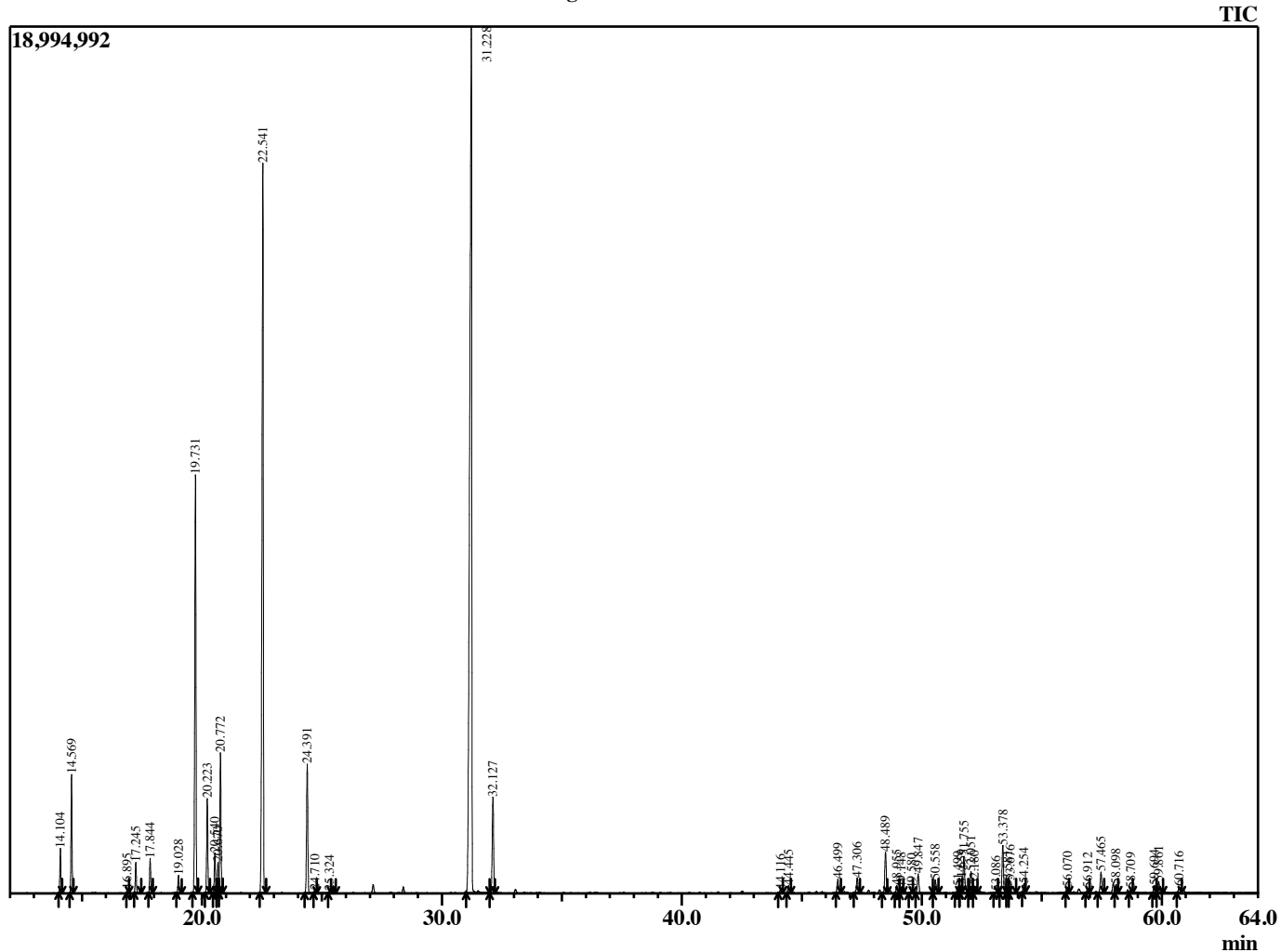


Sample Information

Analyzed by : B. Harris
 Analyzed : 1/12/2015 4:16:00 PM
 Sample Type : Essential Oil
 Sample Name : MelAlt2
 Lot Number : 13313
 Injection Volume : 0.10

Chromatogram MelAlt2 Lot 13313



| R.Time | Name | Area% |
|--------|-----------------------------|--------|
| 14.104 | Thujene <alpha> | 0.94 |
| 14.569 | Pinene <alpha> | 2.49 |
| 16.895 | Sabinene | 0.08 |
| 17.245 | Pinene <beta> | 0.70 |
| 17.844 | Myrcene | 0.81 |
| 19.028 | Phellandrene <alpha> | 0.43 |
| 19.731 | Terpinene <alpha> | 10.52 |
| 20.223 | p-Cymene | 2.38 |
| 20.540 | D-Limonene | 1.02 |
| 20.670 | Phellandrene <beta> | 0.77 |
| 20.772 | 1,8-Cineole | 3.43 |
| 22.541 | Terpinene <gamma> | 20.78 |
| 24.391 | Terpinolene | 3.46 |
| 24.710 | Dehydro-p-cymene | 0.08 |
| 25.324 | Linalyl formate | 0.05 |
| 31.228 | Terpinen-4-ol | 37.65 |
| 32.127 | Terpineol <alpha> | 2.84 |
| 44.116 | Isoledene | 0.10 |
| 44.445 | Copaene <alpha> | 0.21 |
| 46.499 | Gurjunene <alpha> | 0.42 |
| 47.306 | Caryophyllene <trans> | 0.49 |
| 48.489 | Copaene <beta> | 1.34 |
| 48.955 | Guaiene <alpha> | 0.24 |
| 49.148 | Murrola-3,5-diene <trans> | 0.15 |
| 49.580 | Humulene <alpha> | 0.12 |
| 49.847 | Alloaromadendrene | 0.62 |
| 50.558 | Cadina-1(6),4-diene <trans> | 0.52 |
| 51.499 | Selinene <delta> | 0.20 |
| 51.659 | Selinene <beta> | 0.22 |
| 51.755 | Viridiflorene (Ledene) | 1.32 |
| 52.051 | Bicyclogermacrene | 0.75 |
| 52.180 | Muurolene <alpha> | 0.21 |
| 53.086 | Cadinene <gamma> | 0.04 |
| 53.378 | Cadinene <delta> | 1.51 |
| 53.581 | Calamenene <cis> | 0.19 |
| 53.676 | Zonarene | 0.37 |
| 54.254 | Cadina-1,4-diene<trans> | 0.25 |
| 56.070 | Viridiflorol | 0.19 |
| 56.912 | Spathulenol | 0.13 |
| 57.465 | Isomer of alloaromanderene | 0.68 |
| 58.098 | Guaiol | 0.28 |
| 58.709 | Eudesm-5-en-11-ol | 0.16 |
| 59.694 | Eudesmol <10-epi-gamma> | 0.26 |
| 59.861 | Cubenol<1-epi> | 0.39 |
| 60.716 | Cubenol isomer | 0.21 |
| | | 100.00 |