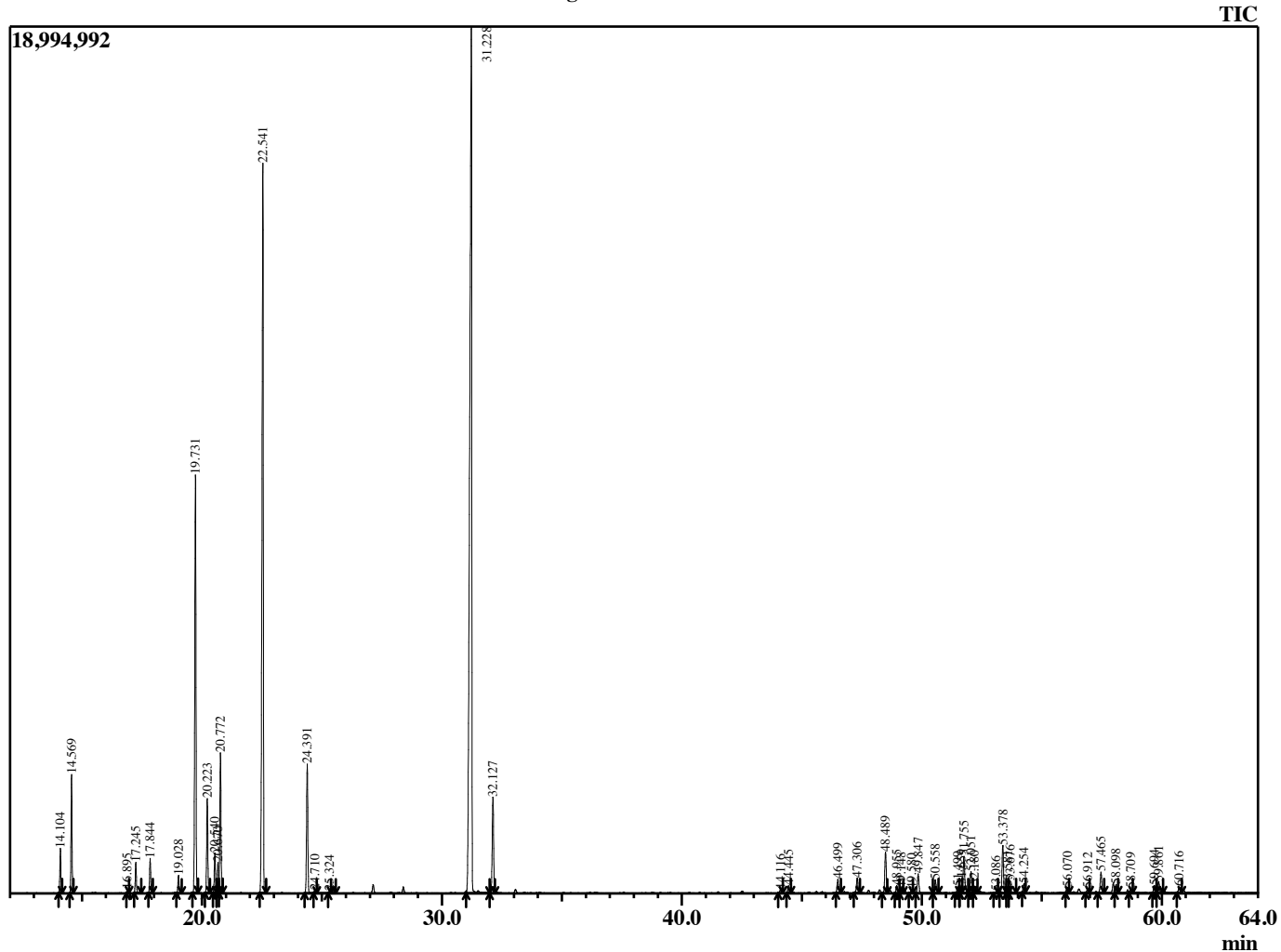


Sample Information

Analyzed by : B. Harris  
 Analyzed : 1/12/2015 4:16:00 PM  
 Sample Type : Essential Oil  
 Sample Name : MelAlt2  
 Lot Number : 13313  
 Injection Volume : 0.10

Chromatogram MelAlt2 Lot 13313



R.Time	Name	Area%
14.104	Thujene <alpha>	0.94
14.569	Pinene <alpha>	2.49
16.895	Sabinene	0.08
17.245	Pinene <beta>	0.70
17.844	Myrcene	0.81
19.028	Phellandrene <alpha>	0.43
19.731	Terpinene <alpha>	10.52
20.223	p-Cymene	2.38
20.540	D-Limonene	1.02
20.670	Phellandrene <beta>	0.77
20.772	1,8-Cineole	3.43
22.541	Terpinene <gamma>	20.78
24.391	Terpinolene	3.46
24.710	Dehydro-p-cymene	0.08
25.324	Linalyl formate	0.05
31.228	Terpinen-4-ol	37.65
32.127	Terpineol <alpha>	2.84
44.116	Isoledene	0.10
44.445	Copaene <alpha>	0.21
46.499	Gurjunene <alpha>	0.42
47.306	Caryophyllene <trans>	0.49
48.489	Copaene <beta>	1.34
48.955	Guaiene <alpha>	0.24
49.148	Murrola-3,5-diene <trans>	0.15
49.580	Humulene <alpha>	0.12
49.847	Alloaromadendrene	0.62
50.558	Cadina-1(6),4-diene <trans>	0.52
51.499	Selinene <delta>	0.20
51.659	Selinene <beta>	0.22
51.755	Viridiflorene (Ledene)	1.32
52.051	Bicyclogermacrene	0.75
52.180	Muurolene <alpha>	0.21
53.086	Cadinene <gamma>	0.04
53.378	Cadinene <delta>	1.51
53.581	Calamenene <cis>	0.19
53.676	Zonarene	0.37
54.254	Cadina-1,4-diene<trans>	0.25
56.070	Viridiflorol	0.19
56.912	Spathulenol	0.13
57.465	Isomer of alloaromanderene	0.68
58.098	Guaiol	0.28
58.709	Eudesm-5-en-11-ol	0.16
59.694	Eudesmol <10-epi-gamma>	0.26
59.861	Cubenol<1-epi>	0.39
60.716	Cubenol isomer	0.21
		100.00