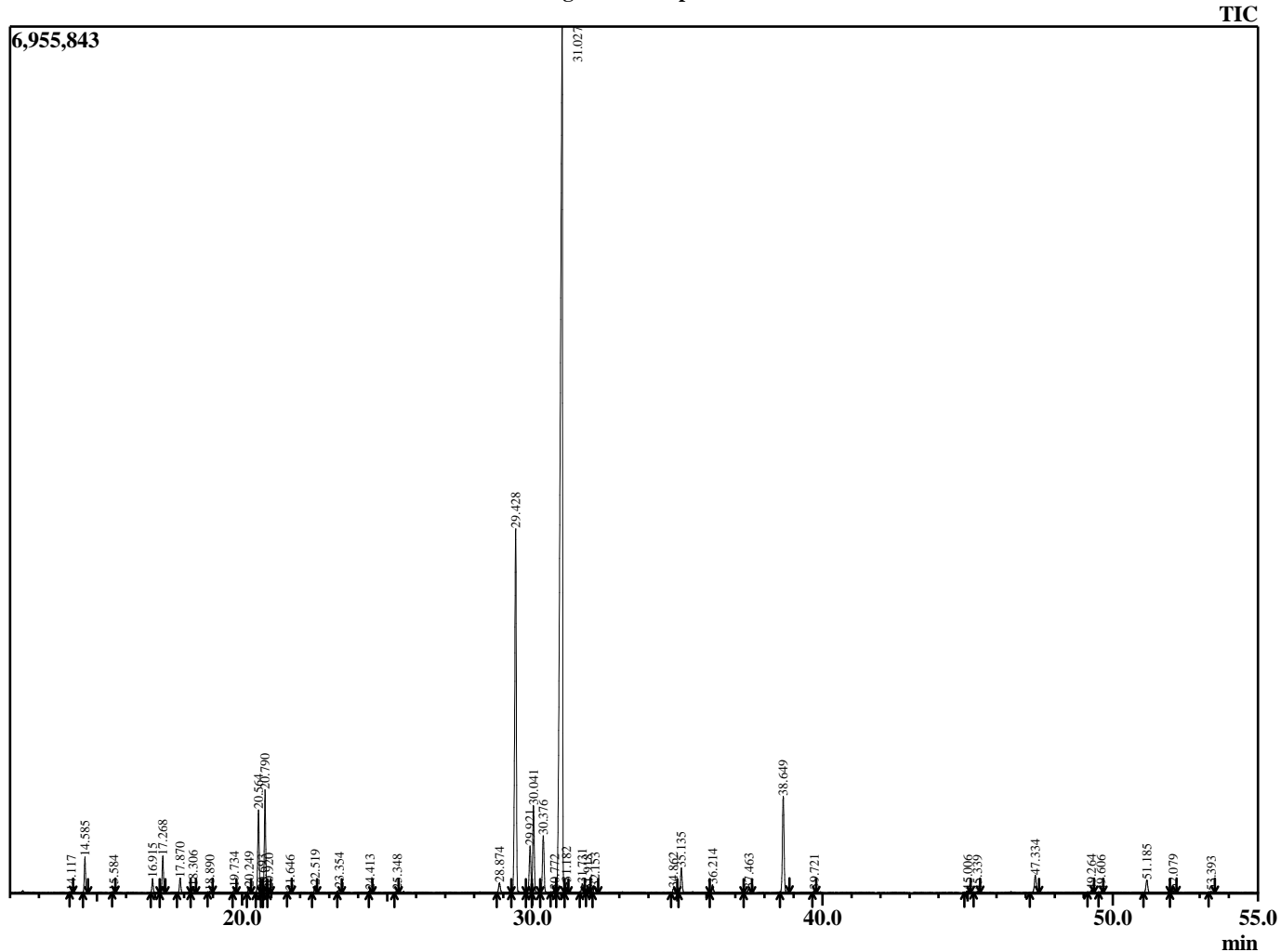


Sample Information

Analyzed by : B. Harris
 Analyzed : 1/27/2015 4:33:42 PM
 Sample Type : Essential Oil
 Sample Name : MenPip1
 Lot Number : 14337
 Injection Volume : 0.10

Chromatogram MenPip1 Lot 14337



R.Time	Name	Area%
14.117	Thujene <alpha>	0.05
14.585	Pinene <alpha>	1.13
15.584	Camphene	0.03
16.915	Sabinene	0.55
17.268	Pinene <beta>	1.33
17.870	Myrcene	0.61
18.306	3-Octanol	0.27
18.890	Pseudolimonene	0.03
19.734	Terpinene <alpha>	0.22
20.249	Cymene <para>	0.24
20.564	Limonene	3.08
20.693	Phellandrene <beta>	0.11
20.790	1,8-Cineole	3.75
20.920	Ocimene <Z-beta>	0.16
21.646	Ocimene <E-beta>	0.05
22.519	Terpinene <gamma>	0.32
23.354	4-Thujanol <trans>	0.22
24.413	Terpinolene	0.13
25.348	Linalool	0.15
28.874	Isopulegol	0.57
29.428	Menthone	15.84
29.921	Menthofuran	2.00
30.041	Isomenthone	3.58
30.376	Neomenthol	2.60
30.772	Isopulegone <trans>	0.12
31.027	Menthol	52.78
31.182	Terpinen-4-ol	0.53
31.731	Neoisomenthol	0.43
31.918	Isomenthol	0.08
32.153	Fenchol <endo>	0.29
34.862	Isovalerate <3-hexenyl>	0.26
35.135	Pulegone	1.22
36.214	Piperitone	0.56
37.463	Menthyl acetate <iso>	0.25
38.649	Menthyl acetate	4.16
39.721	Menthyl acetate <neo>	0.12
45.006	Bourbonene <beta>	0.10
45.339	Elemene <beta>	0.04
47.334	Caryophyllene <trans>	0.86
49.264	Farnesene <(E)-beta>	0.10
49.606	Humulene <(E)-beta>	0.05
51.185	Germacrene D	0.84
52.079	Bicyclogermacrene	0.15
53.393	Cadinene <delta>	0.03
		100.00