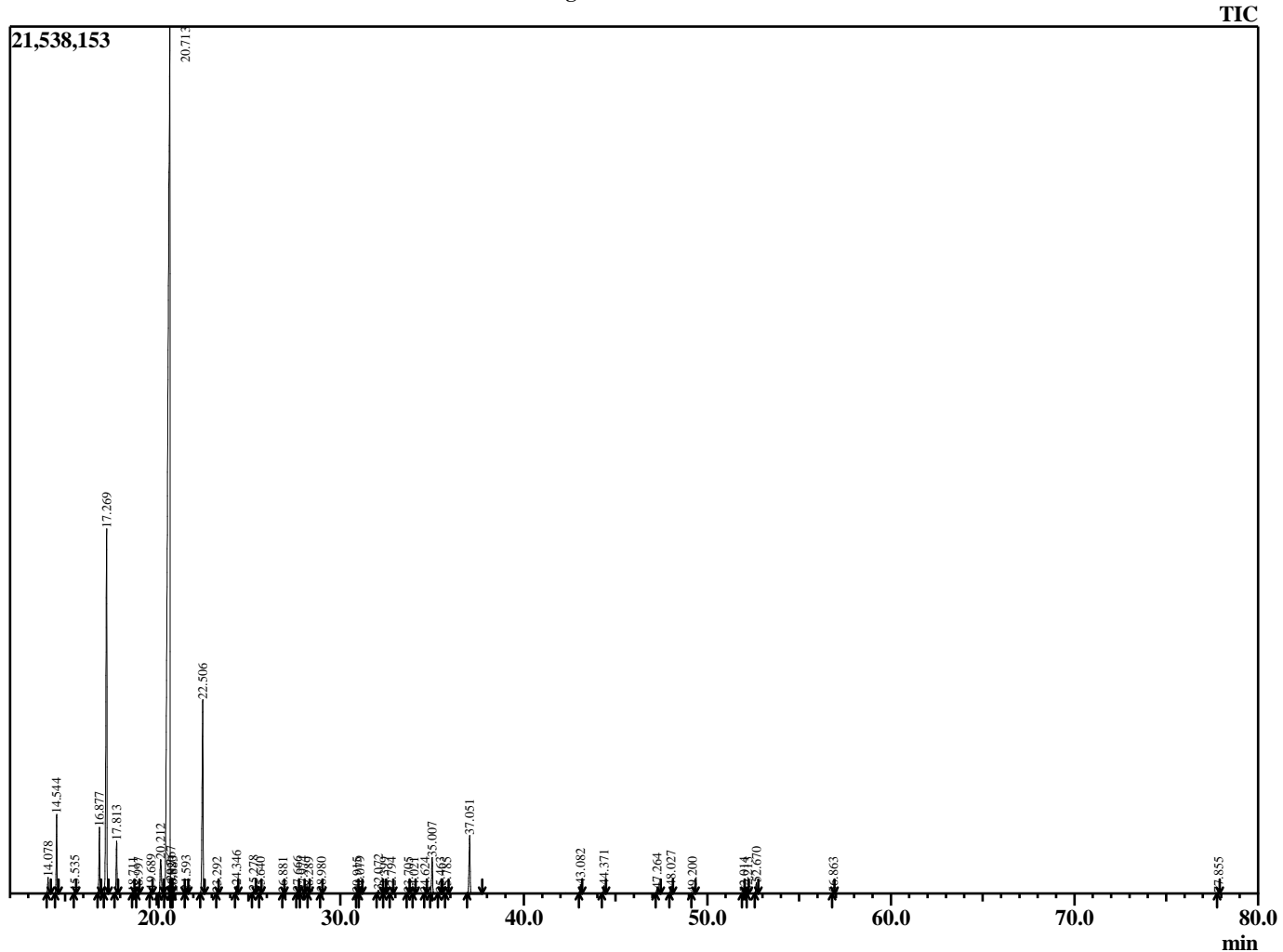


Sample Information

Analyzed by : B. Harris
 Analyzed : 11/16/2015 12:37:29 PM
 Sample Type : Essential Oil
 Sample Name : CitLim3
 Lot Number : 24771
 Injection Volume : 0.10

Chromatogram CitLim3 Lot 24771



R.Time	Name	Area%
14.078	Thujene <alpha>	0.43
14.544	Pinene <alpha>	2.14
15.535	Camphene	0.06
16.877	Sabinene	1.99
17.269	Pinene <beta>	12.72
17.813	Myrcene	1.55
18.711	Octanal	0.02
18.997	Phellandrene <alpha>	0.03
19.689	Terpinene <alpha>	0.13
20.212	Cymene <para>	1.61
20.713	D-Limonene	65.68
20.767	Phellandrene <beta>	0.22
20.820	1,8-Cineole	0.04
20.883	Ocimene <Z-beta>	0.04
21.593	Ocimene <E-beta>	0.08
22.506	Terpinene <gamma>	7.08
23.292	Sabinene hydrate <cis>	0.03
24.346	Terpinolene	0.26
25.278	Linalool	0.10
25.640	Nonanal	0.04
26.881	trans-p-Mentha-2,8-dienol	0.02
27.666	Limonene oxide <cis>	0.05
27.974	Limonene oxide <trans>	0.08
28.289	Pinocarveol <trans>	0.03
28.980	Citronellal	0.04
30.915	Isocitral <trans>	0.02
31.079	Terpinen-4-ol	0.05
32.072	Terpineol <alpha>	0.15
32.399	Perillyl alcohol	0.03
32.794	Decanal	0.01
33.705	Carveol <trans>	0.02
34.021	Nerol	0.02
34.624	Carveol <cis>	0.02
35.007	Neral	1.32
35.463	Carvone	0.03
35.785	Geraniol	0.02
37.051	Geranial	2.25
43.082	Neryl acetate	0.33
44.371	Geranyl acetate	0.28
47.264	Caryophyllene <trans>	0.18
48.027	Bergamotene <trans-alpha>	0.27
49.200	Farnesene<(E)-beta>	0.02
52.014	Bicyclogermacrene	0.02
52.213	Bisabolene <alpha>	0.04
52.670	Bisabolene <beta>	0.41
56.863	Spathulenol	0.02
77.855	Citroptene	0.02
		100.00