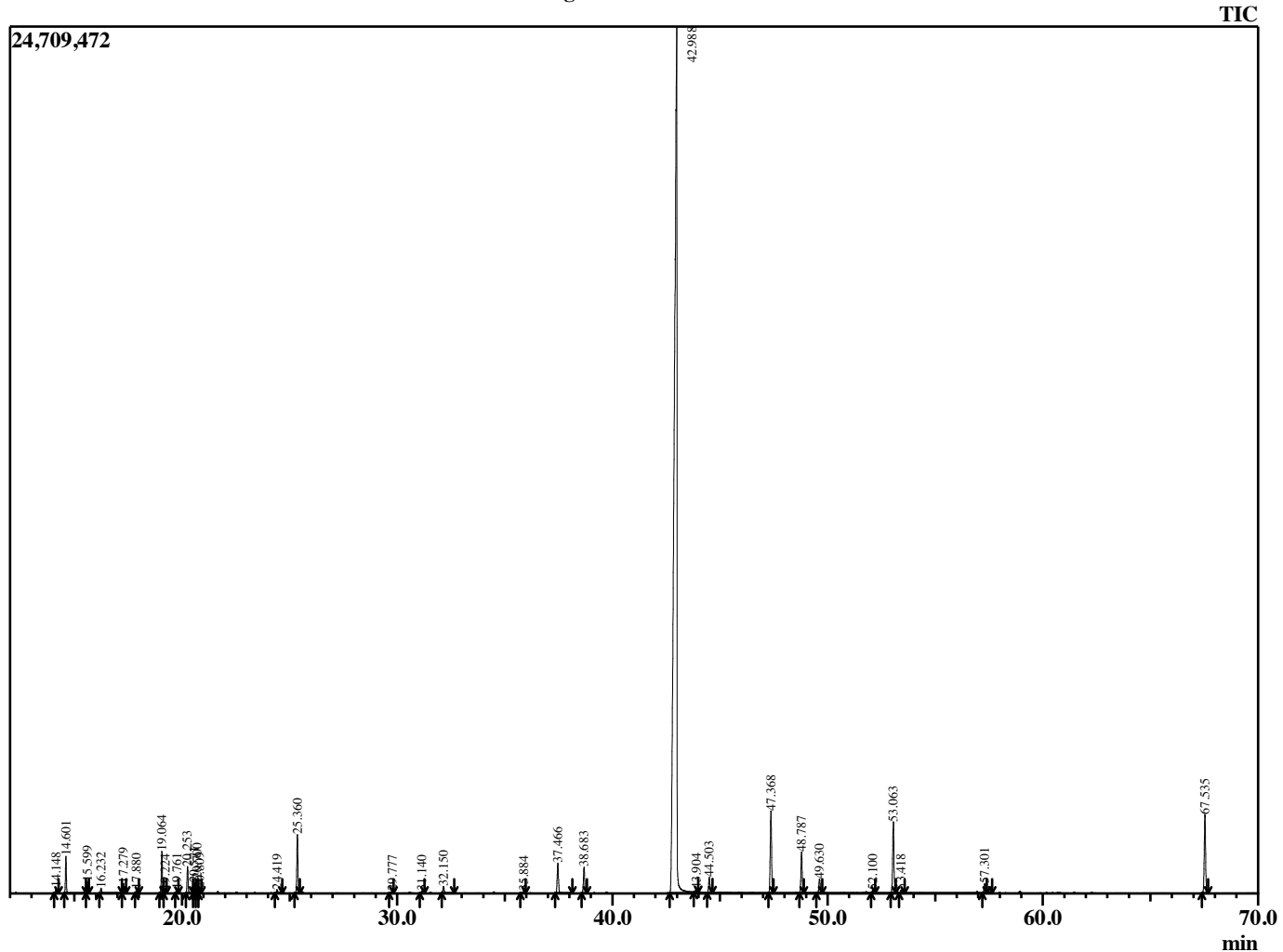


Sample Information

Analyzed by : B. Harris  
 Analyzed : 3/12/2015 10:45:20 PM  
 Sample Type : Essential Oil  
 Sample Name : CinZeL2  
 Lot Number : 11583  
 Injection Volume : 0.10

Chromatogram CinZeL2 Lot 11583



R.Time	Name	Area%
14.148	Thujene <alpha>	0.17
14.601	Pinene <alpha>	1.12
15.599	Camphene	0.36
16.232	Benzaldehyde	0.18
17.279	Pinene <beta>	0.32
17.880	Myrcene	0.15
19.064	Phellandrene <alpha>	1.37
19.224	3-Carene	0.10
19.761	Terpinene <alpha>	0.17
20.253	Cymene <para>	0.93
20.571	Limonene	0.36
20.700	Phellandrene <beta>	0.49
20.809	1,8-cineole	0.17
24.419	Terpinolene	0.19
25.360	Linalool	2.14
29.777	Benzyl acetate	0.10
31.140	Terpinen-4-ol	0.10
32.150	Terpineol <alpha>	0.33
35.884	Chavicol	0.09
37.466	Cinnamaldehyde <E>	1.35
38.683	Safrole	1.07
42.988	Eugenol <m>	75.02
43.904	Propyl acetate <3-phenyl->	0.13
44.503	Copaene <alpha>	0.66
47.368	Caryophyllene <trans>	3.45
48.787	Cinnamyl acetate <(E)->	1.69
49.630	Humulene <alpha>	0.63
52.100	Bicyclogermacrene	0.15
53.063	Eugenol acetate	3.03
53.418	Cadinene <delta>	0.16
57.301	Caryophyllene oxide	0.44
67.535	Benzyl benzoate	3.39
		100.00