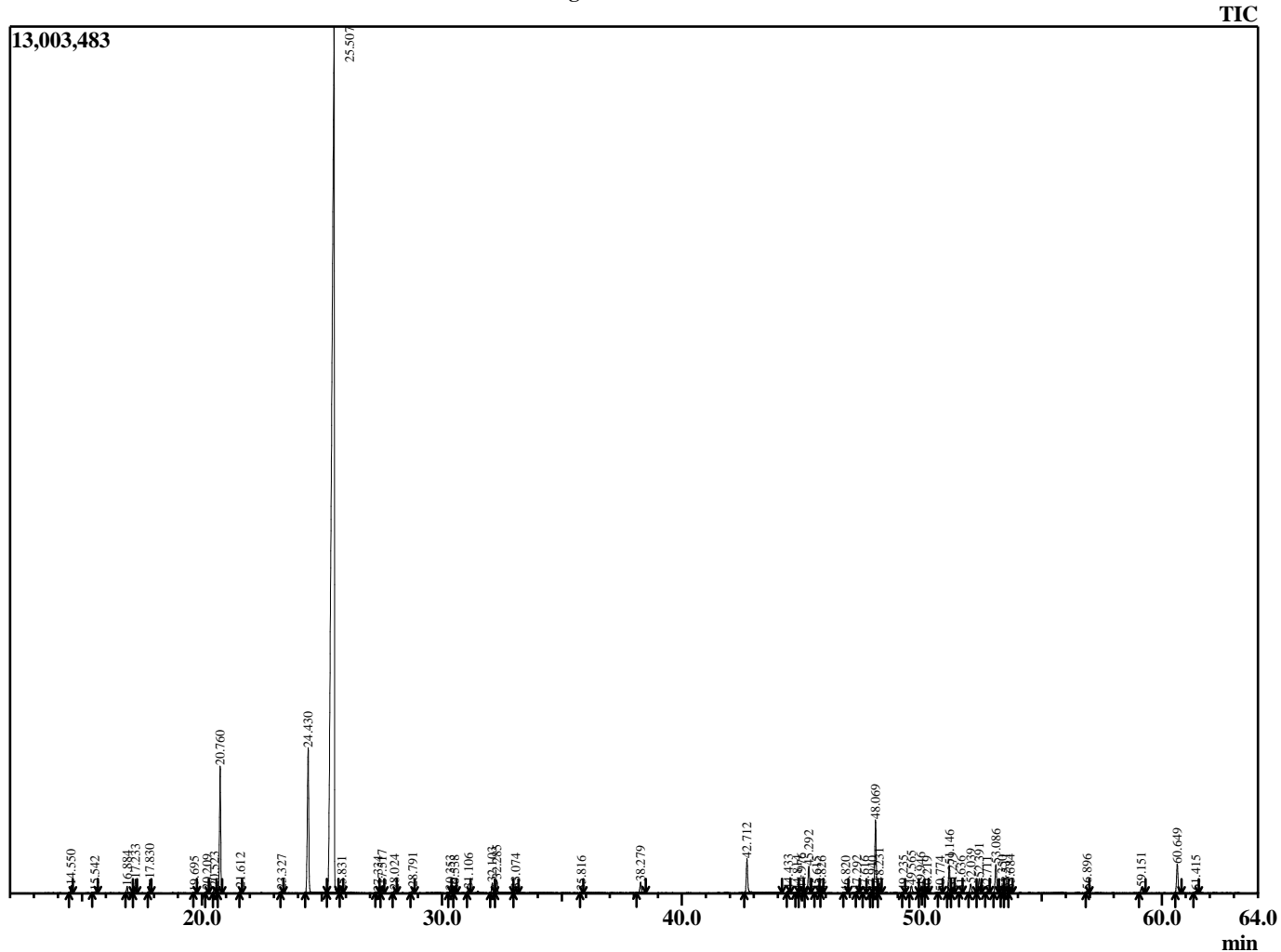


Sample Information

Analyzed by : B. Harris
 Analyzed : 2/12/2015 3:09:45 PM
 Sample Type : Essential Oil
 Sample Name : OciBaL1
 Lot Number : 1225
 Injection Volume : 0.10

Chromatogram OciBaL1 Lot 1225



R.Time	Name	Area%
14.550	Pinene <alpha>	0.24
15.542	Camphene	0.04
16.884	Sabinene	0.26
17.233	Pinene <beta->	0.48
17.830	Myrcene	0.48
19.695	Terpinene <alpha->	0.03
20.209	Cymene <para->	0.11
20.523	Limonene	0.23
20.760	1,8-Cineole	4.64
21.612	Ocimene <(E)-, beta->	0.16
23.327	Sabinene hydrate <cis>	0.13
24.430	Linalool hydrate <cis>	6.25
25.507	Linalool	70.00
25.831	1-Octen-3-yl acetate	0.08
27.334	Pinol <trans>	0.05
27.517	Linalyl formate	0.28
28.024	Myroxide <cis>	0.15
28.791	Camphor	0.23
30.353	Terpineol <isomer>	0.13
30.538	Borneol	0.11
31.106	Terpinen-4-ol	0.17
32.103	Terpineol <alpha->	0.44
32.285	Estragole	0.63
33.074	Octyl acetate	0.18
35.816	Nerol	0.08
38.279	Bornyl acetate	0.47
42.712	Eugenol	1.55
44.433	Copaene	0.13
44.814	Elemene <beta>	0.07
44.976	Bourbonene <beta>	0.18
45.292	Elemene <beta>	1.22
45.615	Cubebene <beta>	0.04
45.826	Methyleugenol	0.05
46.820	Bergamotene <cis-alpha>	0.05
47.292	Caryophyllene <trans-beta>	0.08
47.616	Cedrene <beta->	0.06
47.940	Copaene <beta>	0.04
48.069	Bergamotene <trans-alpha>	3.06
48.231	Guaiene <alpha>	0.44
49.235	Farnesene <Z-beta>	0.09
49.565	Humulene <alpha>	0.40
49.946	Cadina-1(6),4-diene <cis>	0.26
50.219	Acoradiene <alpha>	0.04
50.774	Acoradiene <beta>	0.05
51.146	Germacrene D	1.24
51.279	Farnesene <E-beta>	0.23
51.636	Selinene <beta->	0.05
52.039	Bicyclgermacrene	0.46
52.391	Bulnesene <alpha>	0.67
52.711	Bisabolene <beta>	0.07
53.086	Cadinene <gamma->	1.30
53.350	Cadinene <delta>	0.06
53.511	Calamenene <cis>	0.16
53.684	Sesquiphellandrene <beta>	0.13
56.896	Spathulenol	0.13
59.151	Cubanol<1-epi>	0.27

R.Time	Name	Area%
60.649	Cadinol <epi-alpha>	1.31
61.415	Cubenol	0.10
		100.00